

TOUCH *more*
In Touch with Technology

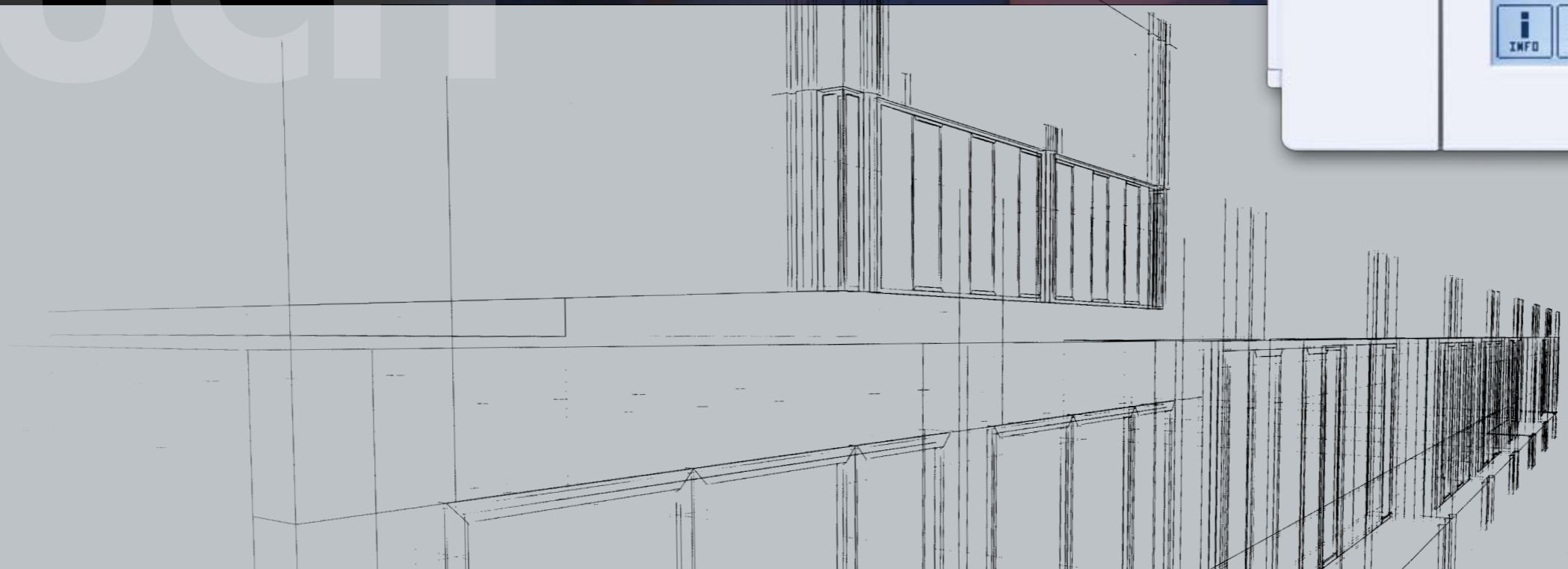


TOUCH

more

TOUCH

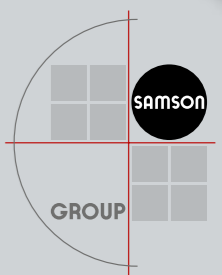
TOUCH



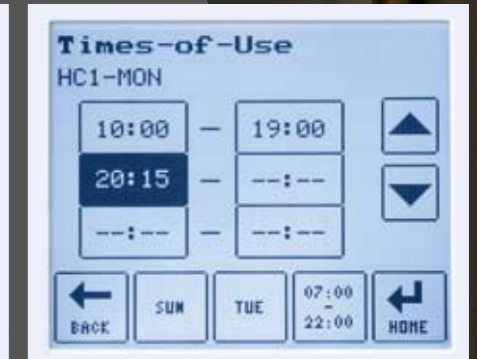
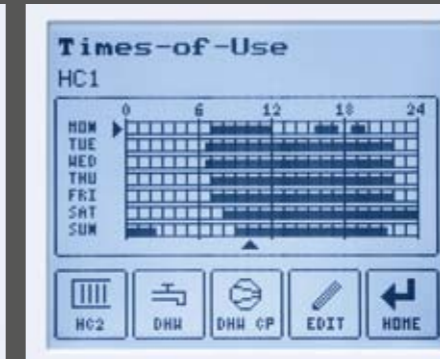
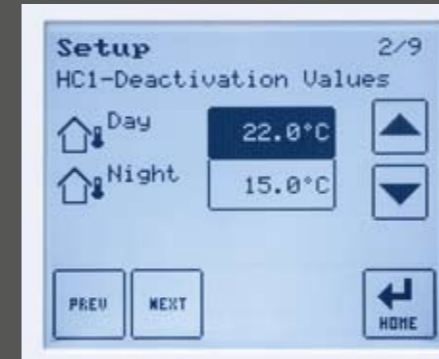
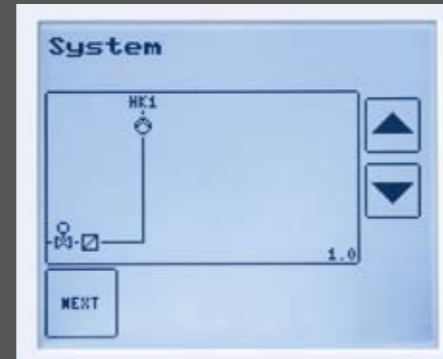
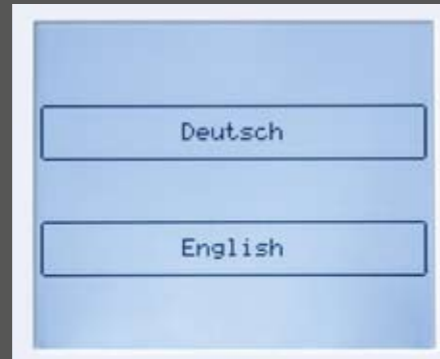
SAMSON AG · MESS- UND REGELTECHNIK
Weismüllerstraße 3 · 60314 Frankfurt am Main · Germany
Phone: +49 69 4009-0 · Fax: +49 69 4009-1507
E-mail: samson@samson.de · Internet: www.samson.de

2011-03 HD - WA 249 EN

■ **TROVIS 5610 Heating and District Heating Controller**



Setting new standards in intuitive operation



In touch with technology

Thanks to its large touch screen, the TROVIS 5610 Heating and District Heating Controller sets new standards in intuitive operation. The nearly 10 cm viewable image size provides completely new possibilities of displaying technical details more clearly.

Interactive operation

A start-up wizard facilitates setting up the controller for the first time. Interactive dialogs guide the user through the initial configuration from selecting the language and plant scheme to setting the time and date. After this, the controller is ready for operation with its default settings.

Simple scheme selection

The user can select schemes from graphics. Eight sensor inputs and seven relay outputs allow the ten default plant schemes to be configured to the user's requirements.

Flexible connection

The TROVIS 5610 Controller can be panel-mounted without a base. In this version, the wires are connected to terminal strips. A base is available for wall mounting.

Convenience in every detail

Special attention has been paid to the customer level. Energy savings can only be achieved when technical details are displayed clearly, e.g. day and night deactivation values. Intelligent programming of times-of-use brings a high energy saving potential. All heating periods can be read at a glance. A touch on the weekly schedule, for example,

allows the user to enter new times-of-use in one block from Monday to Sunday, Monday to Friday, Saturday and Sunday or separately for each day.

Improved operation

In addition to the customer level, the previously used operating levels (configuration and parameter levels) have been retained. In these password-protected levels, all menu items are in plain text as well, making operating instructions more or less superfluous.

TOUCH

more

TOUCH

more

more

TOUCH

TOUCH